



Student Leadership Conference



Energizing Your Future!



**Doubletree Hotel and Executive Meeting Center
Berkeley, California
October 9 - 11, 2009**

The heart of PG&E is a diverse workforce of more than 20,000 people representing a remarkable range of backgrounds and life experiences. Our diversity makes us stronger. And it is a prime source of new and innovative ideas. PG&E is an integral part of the thousands of diverse communities we serve. So, it's no wonder we've been recognized nationally for our diversity accomplishments.

This commitment extends to how we do business. As a major purchaser of goods and services in California, Pacific Gas and Electric Company is committed to creating partnerships with diverse enterprises—businesses owned by women, minorities and disabled veterans. The thinking behind this commitment is simple: The people we work with should be as diverse as the people we serve—the people of California.

Find out more about careers with PG&E.
Visit us on the Web at www.pge.com.



PG&E™ refers to Pacific Gas and Electric Company, a subsidiary of PG&E Corporation.
© 2008 Pacific Gas and Electric Company. All rights reserved.

WELCOME

Energizing Your Future!

Welcome to the San Francisco Bay Area!

Community Colleges

American River College
Bakersfield College
Butte College
Cañada College
City College of San Francisco
Cosumnes River College
Gavilan College
Los Medanos College
Napa Valley College
Sacramento City College
Santa Barbara City College
San Joaquin Delta College
Skyline College
Yuba College

Universities

Cal Poly San Luis Obispo
CSU Chico
CSU East Bay
CSU Fresno
CSU Los Angeles
CSU Sacramento
San Diego State University/CSU
San Francisco State University/CSU
San Jose State University/CSU
Sonoma State University/CSU
UC Santa Cruz
University of the Pacific



ACKNOWLEDGEMENTS

Thank you to our 2009 Planning Committee!

Marya Bloodsaw	Diversity Talent Programs, PG&E
Mae Cendaña	Program Coordinator, MESA
Anndee Francisco	Diversity Program Lead, PG&E
Marvin Lopez	Senior Manager, Diversity Talent Programs, PG&E
Juanita Muñiz-Torres	Director of Statewide Programs, MESA
Tiffany Reardon	Assistant Director, MESA

Thank you to our Workshop Presenters, Staff and Volunteers!



WELCOME LETTER

Dear MESA Student,

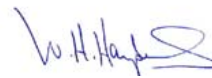
On behalf of the Mathematics, Engineering, Science, Achievement (MESA) program, we welcome you to the 6th Annual Student Leadership Conference, "Energizing Your Future!" You have been selected to participate by your MESA Director based on your demonstrated potential to be a future leader for your college, the MESA program, and ultimately, in your professional field.

The conference is designed to assist you in developing your career strategies. It will provide invaluable networking and skill building opportunities through a variety of workshops that will enhance your leadership and professional skills. This event also offers a unique opportunity for you to interact with representatives from industry and other student organizations.

It is our hope and expectation that you will return to campus with new knowledge and skills, and that you will share the benefits of your experience with classmates and fellow MESA students. Sharing your positive conference experience with others will help raise awareness and encourage other students to participate in MESA.

MESA and PG&E are excited to offer you this opportunity and we sincerely hope that you enjoy the 6th Annual Student Leadership Conference as we celebrate MESA's 40th anniversary.

Sincerely,



Bill Harper
Vice President and Chief Diversity Officer
Pacific Gas and Electric Company
Member, MESA Board of Directors




Oscar F. Porter, Ph.D.
Executive Director
Mathematics, Engineering,
Science, Achievement

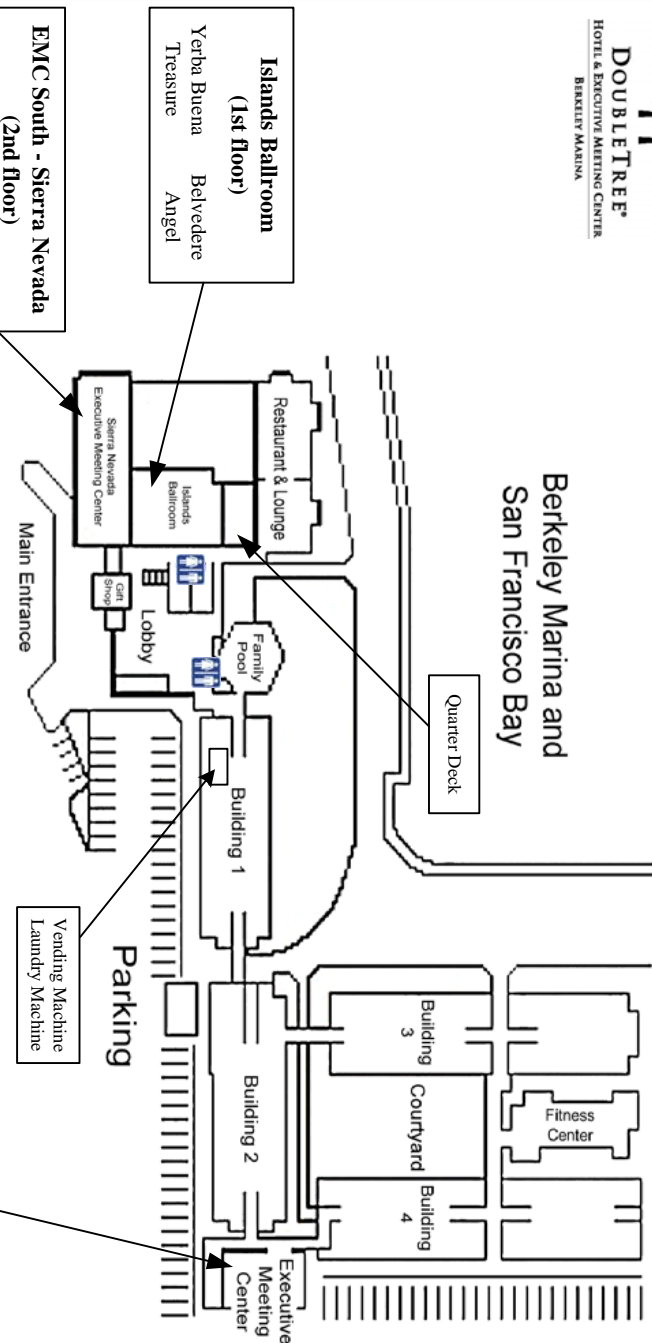


MAP



DoubleTree Hotel & Executive Meeting Center

Berkeley Marina and
San Francisco Bay



EMC South - Sierra Nevada
(2nd floor)
Amador El Dorado
Mariposa

Islands Ballroom
(1st floor)
Yerba Buena
Treasure Belvedere
Angel

Building (5) EMC North Conference Center
(1st floor) Los Angeles San Francisco
EMC Business Center

(2nd floor) Berkeley Sacramento

(3rd floor) Santa Barbara La Jolla

(4th floor) California

SCHEDULE OF EVENTS



Student Leadership Conference 2009
Doubletree Hotel and Executive Meeting Center
Berkeley, California
October 9 – 11, 2009

Friday, October 9

- 3:00 - 5:00 Check-In/Registration – *Ballroom Foyer*
- 5:00 - 6:15 Training for Interviewers – *Santa Barbara Room*
- 5:00 - 6:15 Student Workshops (Open Seating)
- * Building Your Resume – *California Room*
Anndee Francisco, PG&E
 - * How to Land a Job – *La Jolla Room*
Kimberly Pierre
 - * Leveraging Your Skills – *Berkeley Room*
Bianca Bowman, PG&E
- 6:30 - 8:00 Industry Dinner & Networking – *Belvedere/Treasure/Yerba*
SLC 2009 Committee Welcome/Opening
Opening Speech: AT&T
Introductions of Speaker and Champion Award
MESA Champion Award: Jose L. Perez
Chairman, California Utilities Diversity Council
Conference Logistics and Rules

Saturday, October 10

- 8:30 - 9:45 Breakfast and Welcome – *Belvedere/Treasure/Yerba Rooms*
Oscar Porter, Ph.D., Executive Director, MESA Statewide
- 9:45 - 10:00 Break
- 10:00 - 11:00 Workshop Rotation 1
Blue (A), Green (B), Yellow (C), Red (D), Black (E)
- 11:00 - 11:15 Break
- 11:15 - 12:15 Workshop Rotation 2
Blue (B), Green (C), Yellow (D), Red (E), Black (A)

STUDENT FAIR

Research and Graduate Studies

Lawrence Livermore National Lab (LLNL)
Stanford University
University of California, Berkeley

Student Organizations

National Society of Black Engineers (NSBE)
Society for the Advancement of Chicano and Native Americans in Science (SACNAS)
Society of Hispanic Professional Engineers (SHPE)
Society of Women Engineers (SWE)

University Transfer

Cal Poly San Luis Obispo
CSU Chico
CSU East Bay
CSU Fresno
CSU Los Angeles
CSU Sacramento
San Diego State University/CSU
San Francisco State University/CSU
San Jose State University/CSU
Sonoma State University/CSU
University of California, Santa Cruz
University of the Pacific

BIOGRAPHIES

Joyce M. Ibardolasa, SPHR

Director of Diversity and Inclusion, PG&E

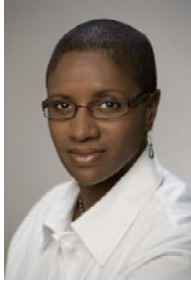


As the Director of Diversity and Inclusion with PG&E, Joyce leads the strategy and execution of programs designed to enhance diversity and inclusion at the company. Joyce joined PG&E Corporation in 2006 as a Human Resources Business Partner supporting the Finance, Risk, and Corporate Strategy and Development groups to provide strategic consultation and then translate into tangible products and processes.

Prior to joining PG&E Joyce built an accomplished 18 year career in Human Resources, most recently as Vice President of Human Resources for Catellus Development Corporation and as Senior HR Manager for a national practice area with Deloitte Consulting. As an HR professional she has developed and implemented Diversity and Inclusion strategies in varied work environments. Joyce attended the University of California at Santa Cruz where she majored in psychology and economics.

Tita Gray

Principal Manager of Diversity & Inclusion, PG&E



East Coast native, Tita Gray, has lived in California for five years. Before moving to the West Coast, she was the Director of Procurement for Bronx, NY based - South Bronx Overall EDC and served for three years as the Chief of Staff for a New York City Council Member.

Ms. Gray is currently the Principal Manager of Diversity & Inclusion at PG&E where she is responsible for building and maintaining systems to track, measure and report on diversity initiatives, identify risks and opportunities related to diversity, and developing strategic goals by identifying and evaluating trends.

Prior to this position she was Manager of Supplier Diversity at PG&E where she was responsible for internal supplier diversity operations including oversight of supplier diversity portfolio and procurement opportunities, strategic alignment with PG&E lines of business and reporting.

Ms. Gray was elected President of PG&E's Pride Network Employee Resource Group for two consecutive years and now serves on the group's Advisory Board. She is a mentor to several employees throughout the PG&E service territory. She is currently a board member for the Center for Young Women's Development and is the President of the American Association of Blacks in Energy - Northern California Chapter. Ms. Gray holds a Bachelors degree from Baruch College in NYC and an MBA from San Francisco State University. Ms. Gray has written several articles on supplier diversity and has lectured at the University of California Santa Clara on Diversity and Inclusion.

SCHEDULE OF EVENTS

Saturday, October 10 (continued)

- 12:15 - 1:00 Lunch – *Belvedere/Treasure/Yerba Rooms*
Emily Behr, Customer Energy Efficiency
Joyce Ibardolasa, Director, PG&E
“Energy and the Environment”
- 1:00 - 2:00 Workshop Rotation 3
Blue (C), Green (D), Yellow (E), Red (A), Black (B)
- 2:00 - 2:15 Break
- 2:15 - 3:15 Workshop Rotation 4
Blue (D), Green (E), Yellow (A), Red (B), Black (C)
- 3:15 - 3:30 Break
- 3:30 - 4:30 Workshop Rotation 5
Blue (E), Green (A), Yellow (B), Red (C), Black (D)
- 4:30 - 5:00 Group Photo – *Berkeley Lawn, Patio*
- 5:00 - 6:00 Student Fair – *Atrium/Foyer Exhibit*
- 6:00 - 6:30 Break
- 6:30 - 8:00 Closing Dinner & Raffle – *Islands Ballroom*
“Bridges to Success: A MESA Alumni Panel”
Fatima Colorado, *MESA Community College Program alumna*
Oscar Dubon, Ph.D., *MESA Engineering Program alumnus*
Marvin Lopez, *MESA Engineering Program alumnus*
Mark O’Leary, *MESA Engineering Program alumnus*
Carol Salazar, *MESA Schools Program alumna*
“Beyond the Baccalaureate Degree”
Emir Macari, *Ph.D.*
Dean College of Engineering and Computer Science
CSU Sacramento
- Closing Remarks**
Larry Broussard, *Chief of Staff*
Office of Assemblymember Sandre Swanson, AD-16
- 8:00 - 10:00 Homework Time/Networking

Sunday, October 11

- 9:00 - 10:00 Breakfast & Grand Prize Raffle - *Belvedere/Treasure/Yerba Rooms*
- 10:00 Check Out/Departure

WORKSHOP DESCRIPTIONS

October 9, Friday Workshops

Building Your Resume...As a Student

California Room

*Anndee Francisco, College Recruiter/Diversity Program Lead,
College Relations, PG&E*

Brief Abstract: Have you ever found yourself frustrated that you don't get a call back after you go to countless career fairs or submit numerous online applications? Have you asked yourself the question "How do they expect me to have 5 or more years of experience when I'm in school?" This workshop will help you understand the differences between writing an educational resume and a professional resume. It will help you market yourself through your resume, *as a Student.*

How to Land a Job

La Jolla Room

Kim Pierre

Have you ever wondered why you are not getting that call back for the job you thought was the right fit for you? This workshop will teach you the Do's and Don'ts of the Job Search.

Leveraging Your Skills in a Slow Job Market

Berkeley Room

Bianca Bowman, EEO/ER Investigator, PG&E

Brief Abstract: This workshop is designed to help students broaden their scope when thinking about post graduate opportunities. This workshop will focus on how you can diversify your skills and experience in ways that will make you more competitive in slow economic times.

October 10, Saturday Workshops

A. Leader vs. Manager

Angel Room

Tita Gray, Principal Manager of Diversity & Inclusion, PG&E

Brief Abstract: This session will focus on the differences between a manager and a leader. Who is responsible to shareholders and employees for the success or failure of the vision? Who is responsible for the implementation for the success and implementation of the vision?

B. Product Development Lifecycle

Mariposa Room

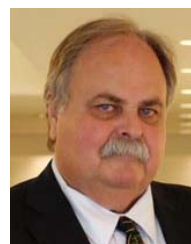
Michael A. Rivera, IT Analyst, AT&T

Brief Abstract: Ever wonder what goes into developing new technology? In this workshop, students will get a hands-on approach to what's involved with inventing a new product. Students will be divided into groups and will get the opportunity to come up with a new product, create specifications, design, and a marketing strategy. Students will get a feel for working with tight deadlines, ambiguous requirements, and competitors. Students will also get an opportunity to market and sell their products to a group of directors, who will decide which group has the best product.

BIOGRAPHIES



Emir Macari, Ph.D. became the Dean of the College of Engineering and Computer Science in August 2006. Prior to joining CSUS, he was Dean of the College of Science, Mathematics, and Technology at The University of Texas at Brownsville and Texas Southmost College (UTB/TSC). Prior to this, Dr. Macari was the Chairman and Bingham C. Stewart Distinguished Professor in the Department of Civil and Environmental Engineering at Louisiana State University (LSU) from 1999 to 2001. In 2001 and 2002, Dr. Macari was on loan to the National Science Foundation (NSF) where he was the Director of the Centers of Research Excellence in Science and Technology (CREST). Before joining LSU, Dr. Macari was Associate Professor of Geosystems Engineering at Georgia Institute of Technology (Georgia Tech) and Associate Professor and Director of the Civil Infrastructure Research Center at the University of Puerto Rico at Mayaguez. He has authored and co-authored more than 80 technical papers.



Oscar F. Porter, Ph.D. currently serves as Executive Director for the statewide office for California's Mathematics, Engineering, Science Achievement (MESA) program. Prior to becoming Executive Director, he was MESA's Chief Operating Officer with responsibility for the daily operation of the program that serves 20,000 students and over 300 schools, colleges and universities across the state. Dr. Porter joined MESA in 1995 as Associate Director for Research, Evaluation and Information Management after serving four years as Associate Vice President for Academic Affairs at the University of Redlands. Dr. Porter has been a high education researcher and administrator for over 30 years and has worked in a variety of institutional environments including an experimental cluster college, a HBCU, a graduate school of law and diplomacy, and two stints with the University of California. He also served as Assistant Executive Director of the National Institute of Independent Colleges and Universities, the research arm of NAICU in Washington, DC. His areas of publication include college persistence and degree completion, minority student and faculty issues, school/college partnerships, the relationship of student financial assistance to college persistence, and most recently, the effectiveness of student academic enrichment program models. In May 2007, he spent 15 days at the University of Novi Sad in Serbia & Montenegro on a Fulbright Senior Specialist award assisting in the development of the University's new Center for Quality Assurance. Dr. Porter earned his dual-major B.A. in history and political science from Tufts University, his M.A. in political science from Michigan State University, and his Ph.D. in higher education from UCLA.

2009 MESA CHAMPION AWARD

Jose L. Perez, Chairman

California Utilities Diversity Council (CUDC)



Founder and owner of the Latino Journal, a publishing, events and consulting business focused on public policy and government from a non-partisan Latino perspective. The Latino Journal (www.latinojournal.net) magazine began in California in 1996 and is now circulated throughout the country and the world via internet. The consulting business includes organizational development projects such as the California Utilities Diversity Council (www.cudc.biz) and the National Utilities Diversity Council, Inc. (www.nudc.biz). The company has championed issues in economic development, education, energy, health, insurance and utilities.

Mr. Pérez is an expert in business and government affairs at the local, state and federal levels especially as it pertains to Latinos and the overall issue of diversity. He is regularly featured in media outlets, conferences and seminars.

Mr. Pérez was employed by the State of California for 25 years. In 1989, he was appointed as Assistant Director for CalTrans. He was a member of the senior executive staff in an agency with over 20,000 employees and an annual budget of \$7.5 billion.

Mr. Pérez currently serves as a member of the Consumer Advisory Panel for Southern California Edison Company. He is also a member and co-founder of the Latino Institute for Corporate Inclusion (LICI), a national organization dedicated to assisting Hispanic inclusion in corporate America.

And he is a member of the UC Davis Medical Center's Leadership Advisory Council, appointed by UC Davis Chancellor Larry Vanderhoff, to assist in fund development, community and legislative outreach and to promote the medical research work.

Mr. Pérez served as Vice President of the California Hispanic Chambers of Commerce, Central Region (1998-2000) and help to represent over 450,000 small business owners before corporate and government interests. He was past president of the Sacramento Hispanic Chamber of Commerce in 2000.

Bachelor of Arts in Government -- CSU, Sacramento, 1976

Certificate on Corporate Governance -- Harvard University, School of Business, 2005

2008 MESA Champion Award Recipient:

Tim Simon

Commissioner, California Public Utilities Commission

WORKSHOP DESCRIPTIONS

C. Communication Skills for the Workplace

California Room

Michael Messina, Consultant, PG&E

Brief Abstract: Participants will learn to use various tools and techniques to assist them in developing and delivering effective presentations. Participants will also take part in an exercise designed to enhance their "engagement skills." The exercise is intended to help ensure the making of a good first impression when speaking in public, networking, interviewing, or just meeting someone for the first time. The training focus is to improve the participant's communication skills by introducing planning and strategy to the creative process. Afterwards, participants will debrief to discuss what they have learned, share observations, describe any difficulties they've encountered and how they may be overcome in the future.

D. Green Engineering

Berkeley Room

Ken Forward, Distribution Project Manager, PG&E

Are you beginning to think about how your engineering classes apply to the new green world? This workshop will engage you in a conversation that will help you understand how the general engineering principles you are learning now relate to Green Engineering.

E. Sharpen Your Interviewing Skills

Quarter Deck

PG&E, MESA Directors, Lawrence Livermore National Lab

Brief Abstract: In this individual workshop session you'll participate in a mock interview with an industry or program administrator. Interviewers will simulate questions most often asked at actual interviews and provide feedback based on your performance. You'll learn tips on interviewing etiquette, how to best prepare your resume, and how to improve your confidence in future interviews.

Lunch Special Presentation

Belvedere/Treasure/Yerba

Energy and the Environment: PG&E's Commitment to a Greener Future

Emily Behr, Supervisor, Customer Energy Efficiency, PG&E

Brief Abstract: The link between greenhouse gas emissions and the Earth's warming climate is convincing, and the potential consequences are serious. Because the electric and natural gas sectors are the largest contributors to U.S. greenhouse gas emissions, companies like PG&E have an obligation to find responsible and effective solutions to the threats posed by global climate change -- and we need to take immediate action. This talk will explore some of the strategies that PG&E is working on to reduce greenhouse gas emissions and lead the way to help create a more sustainable energy future.

Emily Behr is currently a supervisor with the Customer Energy Efficiency team at Pacific Gas and Electric Company. Since starting at PG&E in 2006, Emily has provided strategic positioning and communications support to PG&E's 85 award-winning energy efficiency programs. Prior to joining PG&E, Emily was the director of an academic program for first-generation college bound students at St. Ignatius College Preparatory in San Francisco. Emily has a Bachelor's degree in psychology from Stanford University and a Master's degree in nonprofit administration from the University of San Francisco.

MESA ALUMNI

Fatima Colorado – MESA Community College Program

After finishing high school in El Salvador, Fatima Colorado came to the United States to pursue a degree in engineering. She joined the MESA Program at Skyline Community College where she was active in the program's SHPE Chapter. She was one of three female students in her Calculus III course and still keeps in contact with her classmates. Fatima was awarded a MESA S-STEM scholarship from the National Science Foundation shortly before transferring to Sacramento State where she earned a Bachelor of Science degree in Electrical Engineering. While at Sacramento State she continued her involvement with the MESA Program by joining the MEP Program. Fatima was recruited by PG & E as a student intern and is now a Distribution Engineer Associate. In her spare time she volunteers at local events to help encourage young women to pursue STEM degrees. She is currently preparing to apply to a Master's Program in Business Administration.

Mark O'Leary – MESA Engineering Program

Mark O'Leary graduated from CSU Fresno in 1985 with a Bachelor of Science Degree in Mechanical Engineering and in 2002 earned a Masters in Business Administration from UC Irvine. While at CSU Fresno he was an active member of the MESA Engineering Program. After graduating from Fresno, he was hired by Pacific Gas and Electric Company and has been with the company for over 23 years. Mark is currently a Supervising Project Manager with PG & E's Generation Interconnection Services - Net Energy Metering Team. As a supervising project manager Mark plays a key role in one of PG & E's key areas: Solar Energy. PG&E has the largest number of interconnected solar generation projects in the country with over 30,000 customers now supplying some of their own electric power.

Carol Salazar – MESA Schools Program

A graduate of Clovis High School, Carol Salazar was a student in the MESA Schools Program in high school. After high school she attended the University of California at Santa Barbara where she earned a Bachelor of Arts degree in psychology. Upon graduation, she worked as a Behavioral Counselor for 5 years and monitored the daily operations of an adolescent inpatient psychiatric unit. She also helped in creating an adolescent outpatient treatment program. Soon after she created more community adolescent behavioral, education and outpatient treatment programs for a non-profit organization and eventually accepted a position with the State Department of Mental Health and became Mental Health Specialist monitoring and licensing mental health treatment facilities through out California. In her current position with the Department of Corrections, Carol is a Compliance Coordinator overseeing the Quality Management program for all of California's juvenile institutions.



Graduating students, stay in touch with MESA and find out where other MESA alums are working! Join the "MESA Statewide" group.

MESA ALUMNI

Marvin Lopez – MESA Engineering Program



A Los Angeles area native, Marvin graduated from UCLA with a Bachelor's degree in Computer Science and Engineering; he also holds a Certificate of Business Administration from UC Berkeley Extension. While at UCLA, Marvin was active in the MESA Engineering Program. Upon graduation, Marvin joined Pacific Gas and Electric Company as a computer analyst/programmer. Soon after he moved into management and increasingly critical and visible roles supporting systems ranging from gas load data to electricity procurement and

scheduling and risk management. Over the past several years, Marvin has been involved in college recruitment and community outreach efforts including serving on the Industry Advisory Boards of MESA Engineering Programs at UCLA and San Jose State. Marvin also served as president of the Hispanic Employees Association of PG&E for four years. He is currently Senior Manager of Diversity Talent Programs in Human Resources. In this role, Marvin and his team aim to build a more diverse and inclusive workforce at PG&E in addition to championing PG&E's supplier diversity program.

Oscar Dubón – MESA Engineering Program



Oscar Dubón is Associate Professor in the Department of Materials Science & Engineering (MSE) at U.C. Berkeley and Faculty Scientist at the Lawrence Berkeley National Laboratory. He attended UCLA as an undergraduate student where he was an active student in the MESA Engineering Program. He received a B.S. from UCLA in 1989 and M.S. and Ph.D. from U.C. Berkeley in 1992 and 1996, respectively, all in MSE. After postdoctoral appointments at U.C. Berkeley and Harvard University, he joined the U.C. Berkeley faculty in 2000. He is recipient of the 2000 Robert Lansing Hardy Award from the Minerals, Metals &

Materials Society, a 2004 CAREER Award from the National Science Foundation, and the 2004 Presidential Early Career Award for Scientists and Engineers. Prof. Dubón's research focuses on semiconductor spintronics, molecular beam epitaxy of thin films and nanostructures, and pulsed-laser processing and nanopatterning of materials.



Add "MESA Statewide" as your friend! We provide information about scholarships and internships, as well as post photos and videos of MESA events. We look forward to seeing your MESA posts, photos and videos. What has MESA meant to you? Let us know!